

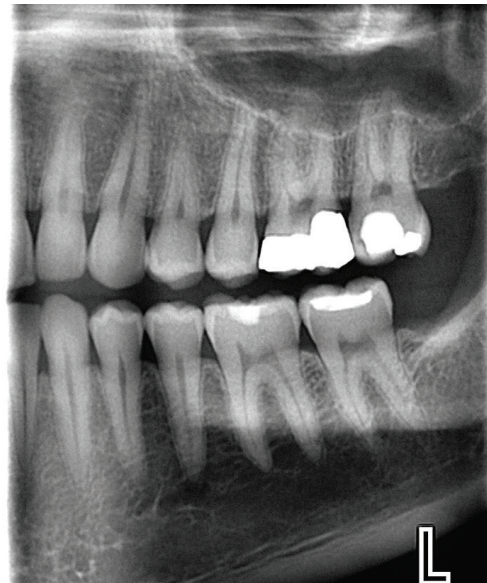
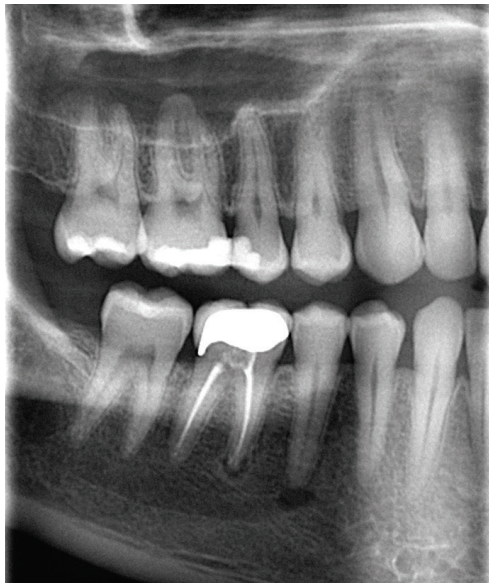
True Extraoral Bitewings

Understanding the Planmeca Difference

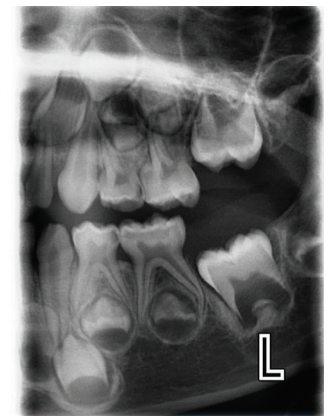
Planmeca is in a unique position to be the only manufacturer that can deliver **True Extraoral Bitewings** that are proven to be as effective as intraoral bitewings at diagnosing caries³, better at identifying crestal bone loss³ and assessing periodontal health. Equally important, we can accomplish this and reveal more anatomy with **less than half the patient radiation dose**.

Less
radiation,
more
information

Approximately 1/2 the radiation of a traditional 4 intraoral bitewing series.²



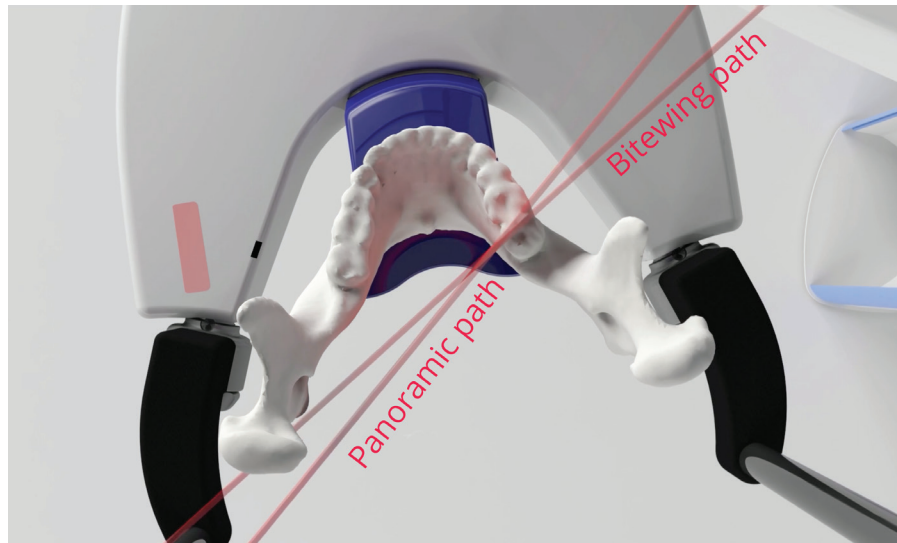
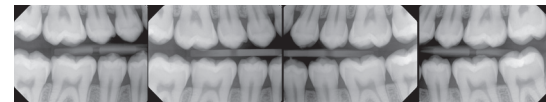
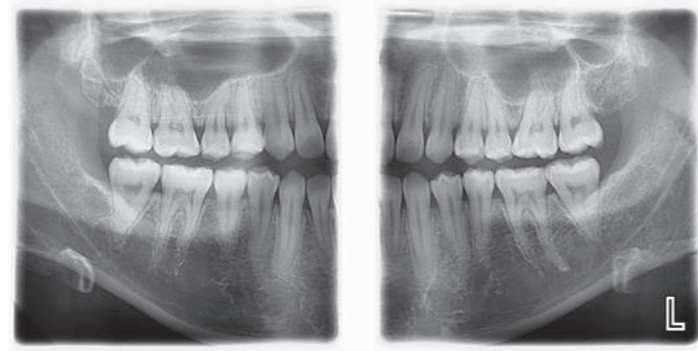
Approximately 1/2 the radiation of 2 traditional 2D intraoral bitewing series.¹



PLANMECA

Why our extraoral bitewings are different?

It's the way we move. Our patented SCARA (Selectively Compliant Articulated Robotic Arm) technology allows our imaging systems to execute highly accurate movements. We can then alter the trajectory path to differ from that of a panoramic image. This consistently opens the interproximal contacts resulting in fewer overlaps. No other company can do this. If it's not a Planmeca **True Extraoral Bitewing**, it's just a segmented panoramic image.



Panoramic trajectory path versus bitewing trajectory path.

Schedule an appointment with a representative to learn how **True Extraoral Bitewings** from Planmeca can provide better patient care.

Yes, have a rep call me.

Our True Extraoral Bitewings offer improved diagnostics:

- Open interproximal contacts
- Clinically proven to be effective at caries detection
- Reveal the alveolar crest of both arches consistently⁴
- Better at detecting bone loss than intraoral bitewings⁴
- See 24% more teeth versus intraoral bitewings⁴
- View apices of each tooth doubling as a periapical.

¹ Acquired with Planmeca ProMax® 2D, XS patient setting at an effective patient dose of 4.1µSv.

² Acquired with Planmeca ProMax® 3D Classic, Medium patient setting, Smartpan bitewing 14 µSv.

³ Dentomaxillofac Radiol. 2016 Apr; 45(4): 20150326, Published online 2016 Mar 9. doi: 10.1259/dmfr.20150326.

⁴ "Accuracy of extraoral bitewing radiography in detecting proximal caries and crestal bone loss", by doctors Micah Chan, DDS, MS, Tenzin Dadul, MDS, Robert, Langlais, DDS, MS, David Russell, DDS, Mansur Ahmad, BDS, PhD. University of Minnesota.