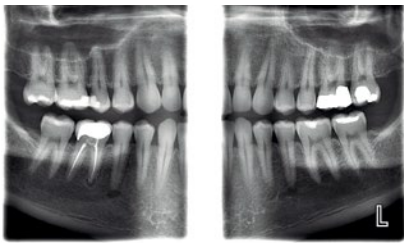


# Planmeca ProMax® 2D S3

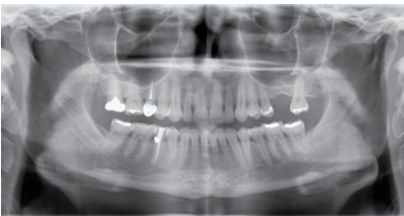
The recipient of multiple Dentaltown® and Orthotown® Townie Choice Awards, the Planmeca ProMax® 2D S3 is our best selling 2D unit. With advanced features and 3D upgradeability, investing in this 2D unit is wise choice for general practioners and orthodontists alike.



Planmeca ProMax® 2D S3 with Planmeca ProCeph™ Option



Extraoral Bitewing



Standard Panoramic



Child Mode Panoramic

## Product features

- **Patented SCARA 3** (Selectively Compliant Articulated Robotic Arm) allows our units to **execute highly accurate movements** required for advanced imaging and True Extraoral Bitewings
- **True Extraoral Bitewings** consistently open interproximal contacts and are clinically proven to be as effective at caries detection when compared to intraoral bitewing series<sup>1</sup>
- **AutoFocus** technology generates a scout image of the anterior structure to virtually guarantee in-focus anteriors on every panoramic image
- Full-view patient positioning allows users to assist patients face-to-face and laser positioning lights refine placement
- **Dynamic Exposure Control** (DEC) measures the patient's radiation transparency and automatically adjusts exposure values
- **Adjustable focal layer** designed to match the shape and size of the patient's anatomy – resulting in clear panoramic images for all patients from children to large adults
- Full-view patient positioning allows users to assist patients face-to-face and laser positioning lights refine placement
- Full-color graphical user interface provides clear texts and symbols to guide you through the procedure
- Includes **extensive standard panoramic programs**, PA and lateral TMJ, PA sinus, and tomographic imaging
- **Child mode** for each standard program to further reduce the patient dose
- Versatile **Planmeca Romexis® 2D** open-architecture imaging software
- **5-year warranty** on the unit including tubehead and sensor

## Optional

- **Upgradeable** to 3D imaging capability
- One-shot **Planmeca ProCeph™** Cephalostat - provides image sizes from Ø18x20 cm to Ø30x25 cm with low patient dose and no movement
- **Planmeca ProMax® Cephalostat** scanning technology with extremely low effective dose and flexible field sizes up to Ø30x27 cm

<sup>1</sup> "Accuracy of extraoral bitewing radiography in detecting proximal caries and crestal bone loss", by doctors Micah Chan, DDS, MS, Tenzin Dadul, MDS, Robert, Langlais, DDS, MS, David Russell, DDS, Mansur Ahmad, BDS, PhD. University of Minnesota.

For more information call **(800) 718 4598** or visit [www.planmeca.com](http://www.planmeca.com) to learn more.

**PLANMECA**