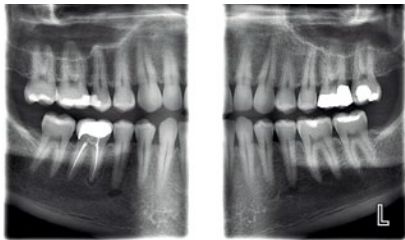


Planmeca ProMax[®] 2D S2

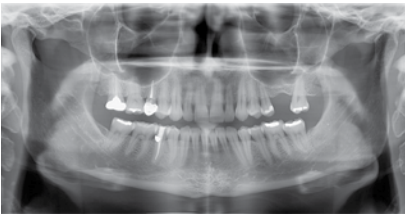
Planmeca ProMax[®] 2D S2 is an excellent choice for general practitioners who need 2D panoramic imaging but don't require all the advanced imaging options and features in other Planmeca 2D models. Priced competitively, this extraoral unit easily fits into budget minded practices.



Planmeca
ProMax[®] 2D S2



Extraoral
Bitewing



Standard
Panoramic



Child Mode
Panoramic

Product features

- **Patented SCARA 2** (Selectively Compliant Articulated Robotic Arm) technology offers precision in image acquisition
- **Dynamic Exposure Control** (DEC) measures the patient's radiation transparency and automatically adjusts exposure values
- **Adjustable focal layer** designed to match the shape and size of the patient's anatomy – resulting in clear panoramic images for all patients from children to large adults
- Full-view patient positioning allows users to assist patients face-to-face and laser positioning lights refine placement
- Full-color graphical user interface provides clear texts and symbols to guide you through the procedure Includes **extensive standard panoramic programs**, PA and lateral TMJ, PA sinus, and tomographic imaging
- Extraoral bitewing program for patients with strong gagging reflex, large tori or other physical limitations
- **Child mode** for each standard program to further reduce the patient dose
- Horizontal and verticle panoramic segmentation program
- Versatile **Planmeca Romexis[®] 2D** open-architecture imaging software
- **5-year warranty** on the unit including tubehead and sensor

Optional

- **Upgradeable to 3D** imaging capability
- One-shot **Planmeca ProCeph[™]** Cephalostat - provides image sizes from Ø18x20 cm to Ø30x25 cm with low patient dose and no movement
- Scanning **Planmeca ProMax[®] Cephalostat**, horizontal scanning with extremely low effective dose and flexible field sizes up to Ø30x27 cm

For more information call **(800) 718 4598**
or visit www.planmeca.com to learn more.

PLANMECA